

FEATURES:

- DC ~ 18 GHz
- Max VSWR: 1.5:1
- 5 Watts Continuous RF Power
- Designed to meet MIL-STD-202g
- Miniature Size
- RoHS Compliant

ORDERING INFORMATION:

Model Number	SMA Connector	Heat Sink
LR018A-F	Female	No
LR018A-M	Male	No
LR018A-F-HS	Female	Yes
LR018A-M-HS	Male	Yes

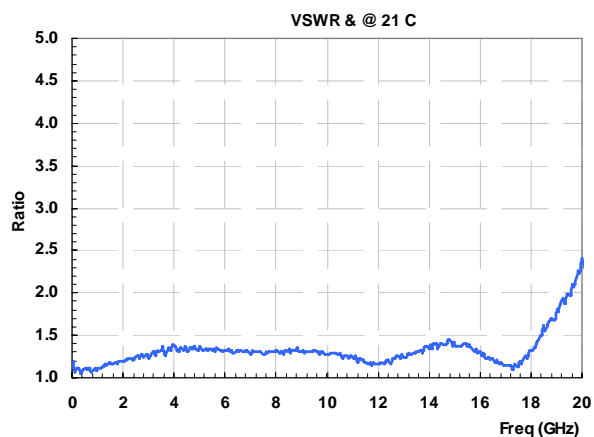
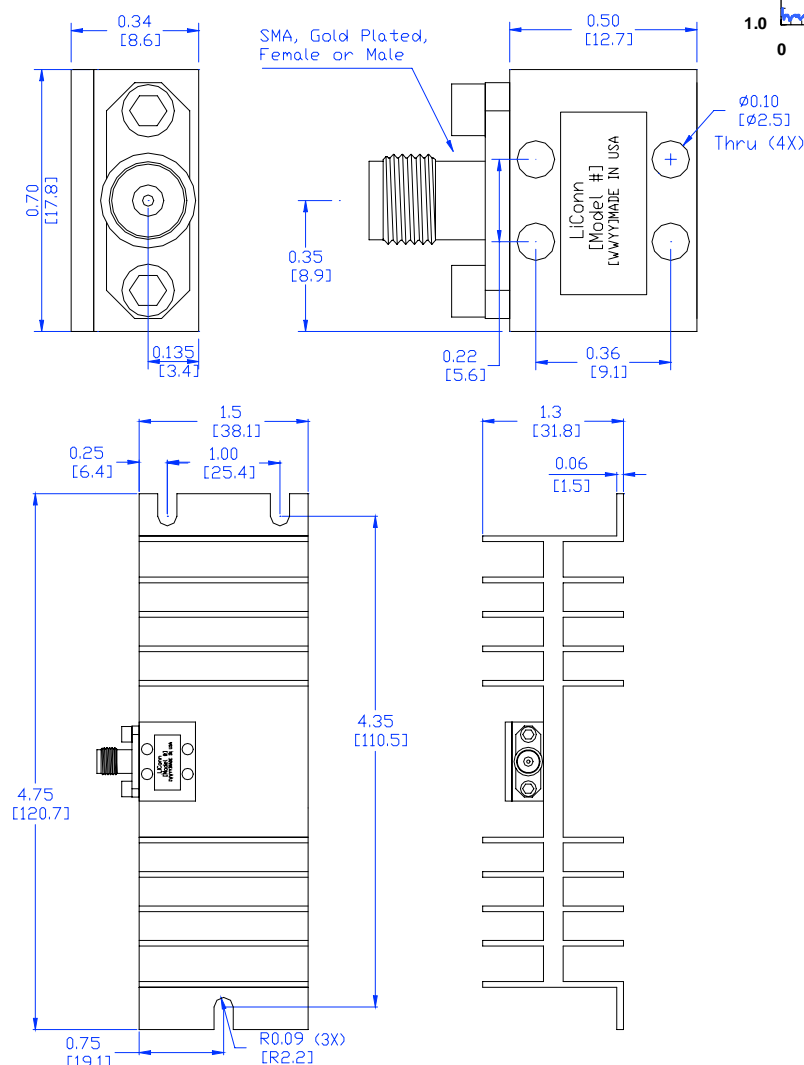
LR018A, DC ~ 18.0 GHz 5 Watts High Power Load

ABSOLUTE MAXIMUM RATINGS¹

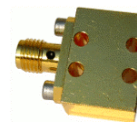
Parameters	Unit	Rating
Maximum RF Power Dissipation	W	5
Operating Temperature	°C	-40 ~ +85
Storage Temperature	°C	-55 ~ 125

[1] Operation beyond these limits may cause permanent damage.

MECHANICAL OUTLINE



Unit: INCH Base Material: Brass
[mm] Finish: Gold Plating
Tolerance: X.XXX ±0.005"
X.XX ±0.01"



Unit: INCH Heat Sink Base Material: Aluminum
[mm] Heat Sink Finish: Black Anodized
Tolerance: X.X ±0.025"
X.XX ±0.015"
X.XXX ±0.01"