

FEATURES:

- 1 MHz– 150 MHz;
- 17.0 dB Gain;
- 3.0dB Noise Figure;
- 30.0 dBm P_{1dB};
- 45.0 dBm IP₃;
- RoHS Compliance

APPLICATIONS:

- SW;
- FM;
- VHF.



LPA00010150A, 1 MHz – 150 MHz WIDE BAND POWER AMPLIFIER

ELECTRICAL SPECIFICATIONS @ 25 °C

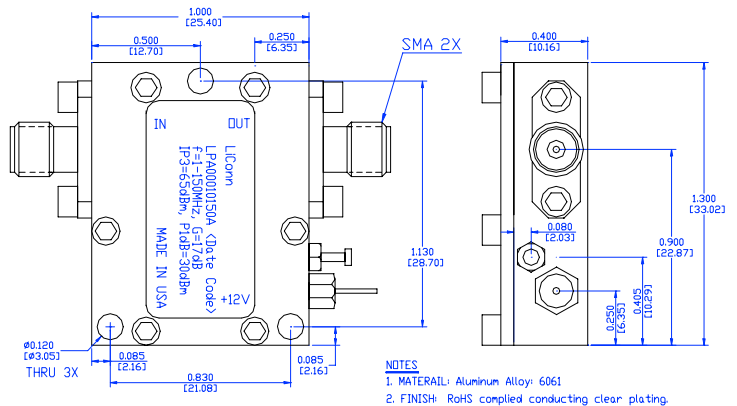
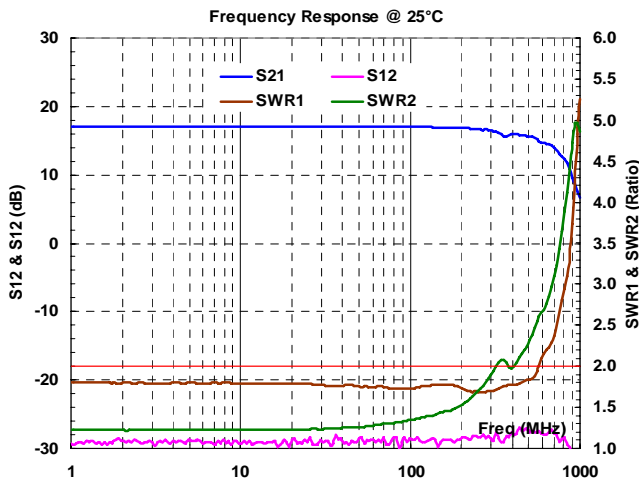
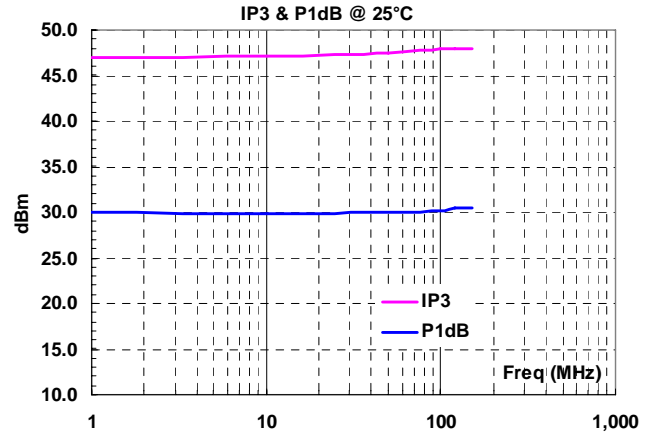
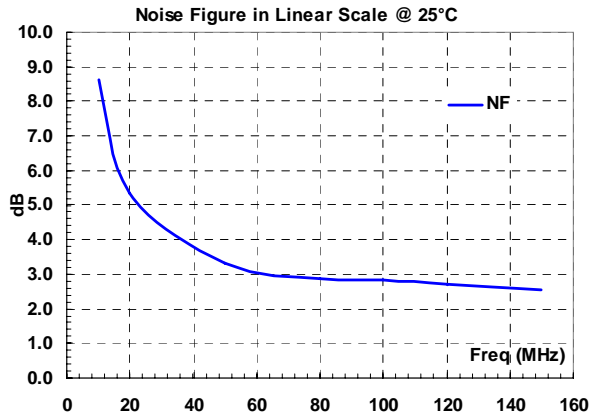
Symbol	Parameters/Conditions	Unit	Min	Typical	Max
G	Gain	dB	16	17.0	18
ΔG	Gain Flatness	dB		±0.2	
I _d	Device Current	mA		200	
NF	Noise Figure	dB		3.0	
OIP3	Output 3 rd Order Intercept	dBm	43	45	
P _{1dB}	Output 1dB Gain Compression	dBm	29	30.0	
SWR ₁	Input VSWR	Ratio			2.0:1
S ₁₂	Reverse Isolation	dB		28	
SWR ₂	Output VSWR	Ratio		1.5:1	2.0:1
V _{dd}	Positive Power Supply Voltage	V	+11.5	+12.0	+15.0

ABSOLUTE MAXIMUM RATINGS¹

Parameters/Conditions	Unit	Maximum
Channel Temperature	°C	+150
DC Supply Voltage	V	16
Drain Current	mA	250
RF Input Power	dBm	20
Total Power Dissipation	W	3.0
Thermal Resistance	°C/W	32
Storage Temperature	°C	-65 ~ +85
Operating Temperature	°C	-40 ~ +85

[1] Operation beyond these limits may cause permanent damage.

ELECTRICAL PERFORMANCE/MECHANICAL OUTLINE



ORDERING INFORMATION: LPA00010150A